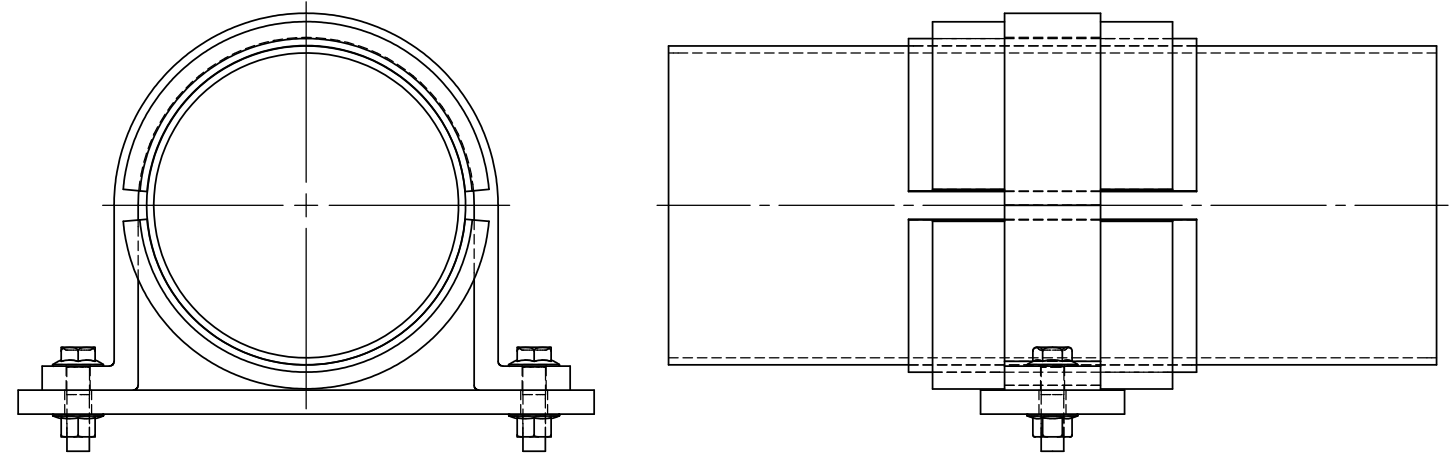


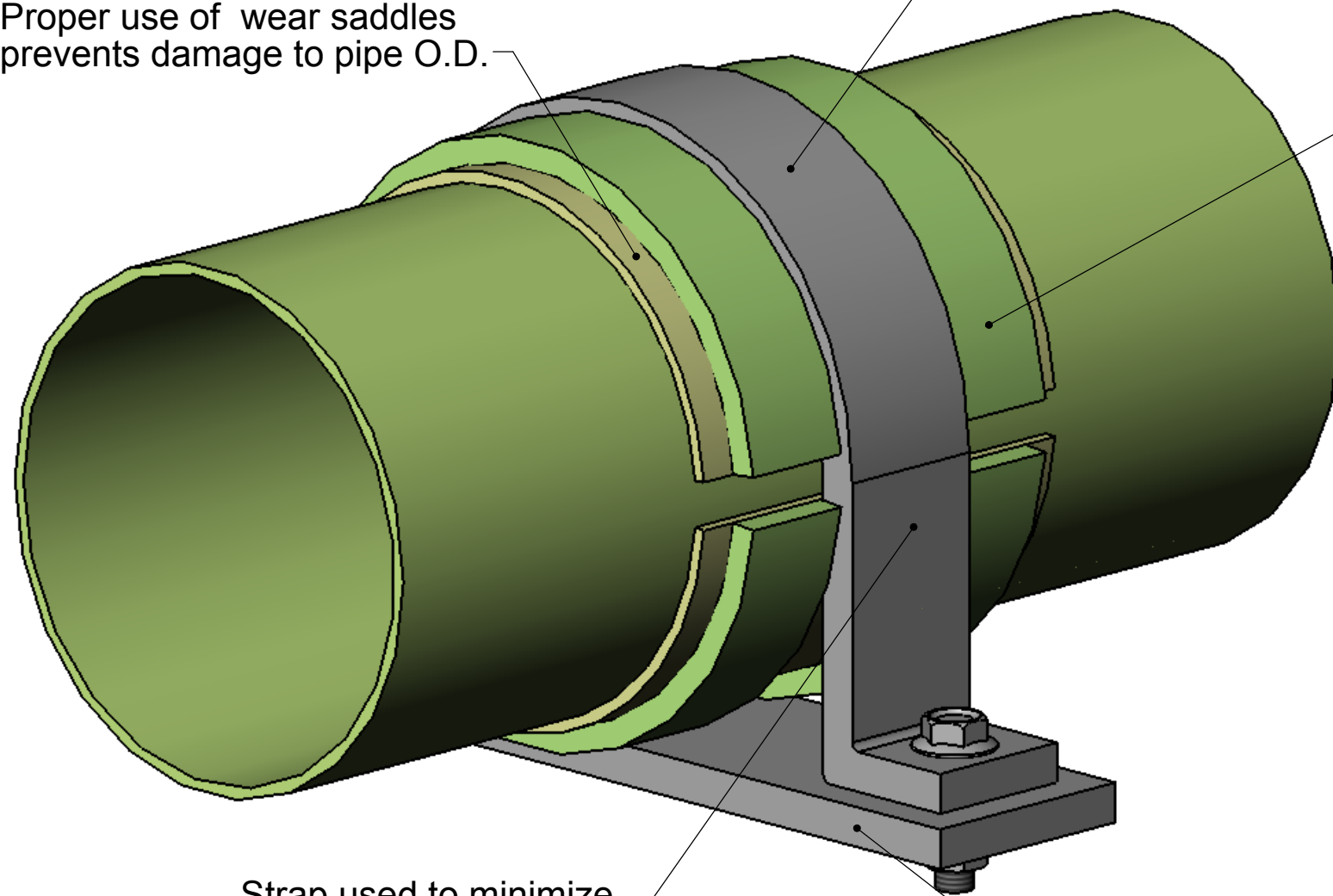
NOTES:



Proper use of wear saddles prevents damage to pipe O.D.

Clamp snug, not not tight

Shoulder saddles, bonded to wear saddles, control axial motion



Strap used to minimize effects of point loading

Strap bolted to bracket, beam or other supporting component

Pipe Anchors: Anchor Steel & FRP Anchor Saddle Minimum Widths

Pipe Size (in)	CL-2030, RB-2530, Chem Thread, Z-Core		Red Thread II, Green Thread, Silver Streak, F-Chem, CL-1520, RB-1520	
	Minimum Steel Width	Anchor Saddle Width (min.) (180° x 2)	Minimum Steel Width	Anchor Saddle Width (min.) (180° x 2)
1"	7/8"	1"	7/8"	1 1/2"
1 1/2"	7/8"	1 1/2"	7/8"	1 1/2"
2"	7/8"	2"	7/8"	2"
3"	1 1/4"	3"	1 1/4"	2"
4"	1 1/4"	4"	1 1/4"	4"
6"	1 1/2"	6"	1 1/2"	4"
8"	1 3/4"	6"	1 7/8"	4"
10"	1 3/4"	6"	2 5/8"	4"
12"	2"	6"	3 1/4"	4"
14"	2"	6"	4"	4"
16"	-	-	4"	4"
18"	-	-	4"	8"
20"	-	-	4"	8"
24"	-	-	4"	8"

* Anchor saddles should be bonded with DS 3033 adhesive (P/N 46990-060-0) or Weldfast ZC 275 (P/N 390927-020-1) for maximum shear strength.

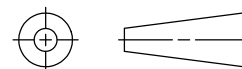
Eastern Canada #1 - 125 Main Street Woodstock, Ontario N4S 1T1
 Western Canada #100, 18012 - 105 Avenue Edmonton, Alberta T5S 2P1
 Toll Free: (800) 410-4802
 Fax: (519) 537-8321
 frp@frpsolutions.com

FibreglassSolutions Inc.

Strap Anchor

FRP-A-2

THIRD ANGLE PROJECTION



CUSTOMER X	DATE 30 Jan 06
PROJECT Anchor, Support and Guide Design	DATE 28 Feb 06
DRAWN BY J.GANDER	DATE 18 Apr 06
CHECKED BY B.GOWLAND	
APPROVED B.GOWLAND	

TITLE	SCALE	WEIGHT	REVISION
Strap Anchor	Not to Scale	N/A lbs	FRP-A-2
			SHEET 1 OF 1