

STAR • SMITH • FIBERCAST

SILVER STREAK® EP FITTINGS DIMENSIONS

• SILVER STREAK piping and fittings are designed especially for abrasive and corrosive services such as limestone and gypsum slurries, found in flue gas desulfurization (FGD) scrubber applications.

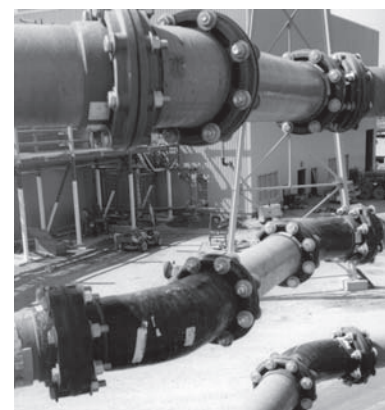
• SILVER STREAK piping systems are designed to operate at temperatures up to 225°F and pressures up to 225 psig.

• All bell end and assembled flanged* Silver Streak fittings are rated for service up to 225 psig.

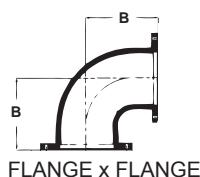
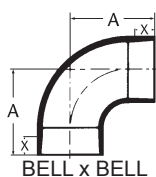
• A complete line of standard long-radius fittings are available. Odd degree elbows are available on special order.

• Fittings are constructed with the same abrasion-resistant additives as the pipe.

• All fittings, except compression molded, have a nominal corrosion/abrasion barrier of 100 mils.

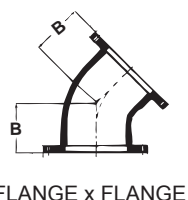


90° Elbow



Nominal Pipe Size (In.)	A (In.)	Max. Pressure (psig)	B ⁽¹⁾ (In.)	B ^{(1)*} (In.)	Max. Pressure (psig)	X ⁽²⁾ (In.)	B x B Weight (lbs)	F x F Weight (lbs)
2	6.31	225	--	9.50	225	2.64	8.8	11.8
3	8.00	225	--	11.62	225	2.86	13.2	19.2
4	9.75	225	--	13.50	225	3.13	17.6	26.2
6	12.75	225	--	17.00	225	2.76	26.5	38.0
8	19.50	225	16.12	-- ⁽³⁾	150	5.28	35.0	45.0
10	23.25	225	19.88	-- ⁽³⁾	150	5.12	67.0	86.0
12	27.00	225	23.12	-- ⁽³⁾	150	6.40	101	138
14	30.00	225	24.50	-- ⁽³⁾	150	4.55	198	256
16	34.00	225	27.87	-- ⁽³⁾	150	5.61	260	322
18	40.75	225	--	47.00	225	12.00	353	468
20	47.25	225	--	53.00	225	13.75	470	609
24	57.00	225	--	63.00	225	15.62	672	866

45° Elbow



Nominal Pipe Size (In.)	A (In.)	Max. Pressure (psig)	B ⁽¹⁾ (In.)	B ^{(1)*} (In.)	Max. Pressure (psig)	X ⁽²⁾ (In.)	B x B Weight (lbs)	F x F Weight (lbs)
2	4.56	225	--	7.50	225	2.64	5.0	8.4
3	5.25	225	--	8.62	225	2.86	8.1	14.1
4	6.25	225	--	9.62	225	3.13	10.8	19.4
6	7.50	225	--	11.37	225	2.76	16.2	27.7
8	12.50	225	9.00	-- ⁽³⁾	150	5.28	21.6	32.0
10	14.50	225	11.12	-- ⁽³⁾	150	5.12	43.0	62.0
12	16.50	225	12.62	-- ⁽³⁾	150	6.40	65.0	102
14	17.62	225	12.25	-- ⁽³⁾	150	4.55	109	167
16	20.00	225	13.75	-- ⁽³⁾	150	5.61	144	206
18	25.00	225	--	31.00	225	12.00	209	324
20	29.75	225	--	36.00	225	13.75	259	398
24	36.00	225	--	42.00	225	15.62	389	583

B = BELL F = FLANGE

(1) Flanged dimensions are flange face to center line.

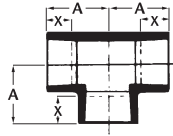
(2) This is a nominal make-up dimension for drawing layout work only. Do not use for assembly dimensions.

(3) Special dimension 225 psi fittings are available upon request.

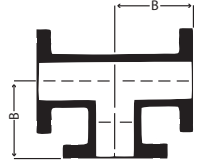
* Filament wound flanged fittings are made by bonding nipples and flanges to belled fittings.

SILVER STREAK® EP FITTINGS DIMENSIONS

Tee



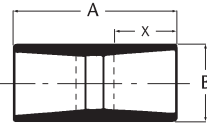
BELL x BELL x BELL



FLANGE x FLANGE
x FLANGE

Nominal Pipe Size (In.)	A (In.)	Max. Pressure (psig)	B ⁽¹⁾ (In.)	B ^{(1)*} (In.)	Max. Pressure (psig)	X ⁽²⁾ (In.)	B x B x B Weight (lbs)	F x F x F Weight (lbs)
2	5.56	225	--	8.37	225	2.64	6.8	11.2
3	6.25	225	--	9.37	225	2.86	10.1	19.1
4	7.50	225	--	10.62	225	3.13	13.5	26.4
6	9.50	225	--	13.12	225	2.76	27.5	45.0
8	13.50	225	9.00	-- ⁽³⁾	150	5.28	41.0	56.0
10	15.75	225	11.00	-- ⁽³⁾	150	5.12	56.0	85.0
12	17.00	225	12.00	-- ⁽³⁾	150	6.40	88.0	144
14	19.50	225	14.00	-- ⁽³⁾	150	4.55	120	207
16	21.25	225	15.00	-- ⁽³⁾	150	5.61	150	243
18	26.50	225	--	33.00	225	12.00	195	300
20	31.25	225	--	38.00	225	13.75	255	371
24	35.00	225	--	41.00	225	15.62	356	496

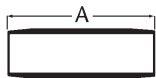
Sleeve Coupling



BELL x BELL

Nominal Pipe Size (In.)	A (In.)	B (In.)	X ⁽²⁾ (In.)	Max. Operating Pressure (psig)	B x B Weight (lbs)
2	4.87	2.50	1.84	225	0.4
3	6.50	3.87	2.36	225	0.8
4	6.50	4.87	1.99	225	0.9
6	8.00	7.00	2.87	225	1.9
8	10.50	9.12	3.47	225	3.4
10	11.00	11.12	4.34	225	5.2
12	12.50	13.12	4.82	225	7.5
14	15.00	15.12	5.47	225	11.2
16	17.00	17.25	6.27	225	16.0
18	14.00	18.75	5.25	225	22.7
20	17.00	20.75	6.00	225	27.5
24	20.00	25.00	6.75	225	38.0

Nipple



Nominal Pipe Size (In.)	Nipple Length (In.)											
	6	(lbs)	8	(lbs)	12	(lbs)	16	(lbs)	24	(lbs)	36	(lbs)
2	◆	0.6	◆	0.7	--	--	--	--	--	--	--	--
3	◆	0.8	◆	1.1	--	--	--	--	--	--	--	--
4	--	--	◆	1.4	--	--	--	--	--	--	--	--
6	--	--	◆	2.1	◆	3.1	◆	4.1	--	--	--	--
8	--	--	--	--	◆	4.8	◆	6.4	--	--	--	--
10	--	--	--	--	◆	6.1	◆	8.1	--	--	--	--
12	--	--	--	--	--	--	◆	10.0	--	--	--	--
14	--	--	--	--	--	--	◆	13.3	--	--	--	--
16	--	--	--	--	--	--	◆	17.1	--	--	--	--
18	--	--	--	--	--	--	--	--	--	--	◆	45.0
20	--	--	--	--	--	--	--	--	--	--	◆	55.0
24	--	--	--	--	--	--	--	--	--	--	◆	76.0

B = BELL F = FLANGE

◆ Standard stock.

* Filament wound flanged fittings are made by bonding nipples and flanges to belled fittings.

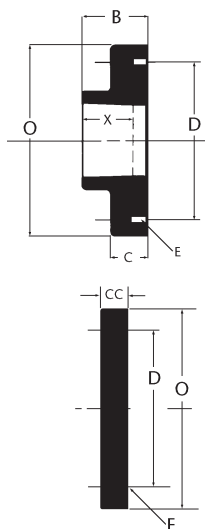
(1) Flanged dimensions are flange face to center line.

(2) This is a nominal make-up dimension for drawing layout work only. Do not use for assembly dimensions.

(3) Special dimension 225 psi fittings are available upon request.

SILVER STREAK® EP FITTINGS DIMENSIONS

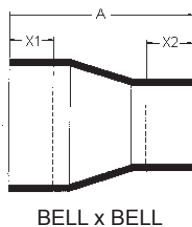
Flange



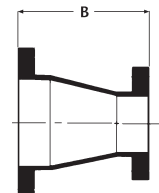
Nominal Pipe Size (In.)	B	C	CC	D	E	O	X ⁽¹⁾	Max. Operation Pressure (psig)		Weight (lbs)	
								Flange	Blind Flange	Flange	Blind Flange
2	2.25	.75	.75	4.75	.75 D-4 holes	6.00	1.75	225	150	1.3	1.3
3	2.62	1.37	1.00	6.00	.75 D-4 holes	7.50	2.25	225	150	2.6	3.0
4	2.62	1.37	1.00	7.50	.75 D-4 holes	9.00	2.25	225	150	3.6	4.0
6	3.00	1.50	1.12	9.50	.875 D-8 holes	11.00	2.75	225	150	4.4	6.6
8	4.00	1.75	1.12	11.75	.875 D-8 holes	13.50	3.25	225	135	9.3	10.6
10	4.75	2.00	1.25	14.25	1 D-12 holes	16.00	3.75	225	95	16.0	16.3
12	5.00	2.25	1.25	17.00	1 D-12 holes	19.00	3.75	225	65	24.0	24.0
14	3.12	2.50	1.62	18.75	1.125 D-12 holes	20.75	3.00	225	150	30.0	45.0
16	3.12	2.50	1.87	21.25	1.125 D-16 holes	23.25	3.00	225	150	37.0	67.0
18	9.00	2.75	2.50	22.75	1.25 D-16 holes	25.00	7.00	225	150	42.0	76.0
20	11.00	2.75	2.75	25.00	1.25 D-20 holes	27.50	8.80	225	150	46.0	84.0
24	13.00	3.00	3.37	29.50	1.375 D-20 holes	32.00	8.80	225	150	56.0	101

Note: All flanges are ANSI B16.5-150 lb. Bolt Hole Circle.

Concentric Reducer



BELL x BELL



FLANGE x FLANGE

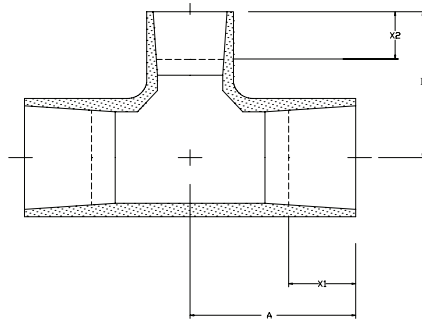
Nominal Reducer Size (In.)	A	Max. Pressure (psig)	X1 ⁽¹⁾	X2 ⁽¹⁾	B	B x B Weight (lbs)	F x F Weight (lbs)
3 x 2	7.50	225	2.81	2.63	14.75*	7.4	14.0
4 x 3	9.25	225	3.13	2.63	15.38*	10.7	20.6
4 x 2	9.00	225	3.13	2.63	17.00*	10.1	22.2
6 x 4	11.50	225	2.75	3.13	18.13*	14.1	26.6
6 x 3	11.25	225	2.75	2.68	19.63*	13.4	28.8
6 x 2	11.00	225	2.75	2.63	21.25*	12.7	27.8
6 x 4	11.50	225	2.75	3.13	18.13*	14.1	26.6
8 x 6	16.75	225	5.25	2.75	25*	17.1	34.0
8 x 4	16.75	225	5.25	3.13	24.13*	16.4	32.0
8 x 3	16.25	225	5.25	2.81	24.13*	15.6	31.0
8 x 2	16.00	225	5.25	2.63	24.13*	14.8	29.7
10 x 8	21.00	225	5.06	5.25	12.00	28.2	43.0
10 x 6	18.00	225	5.06	2.75	12	24.4	42.2
12 x 10	23.50	225	6.40	5.12	14.00	44.0	72.0
14 x 12	26.25	225	4.50	6.38	16.00	67.0	115
14 x 10	26.00	225	4.50	5.06	16.00	60.0	106
16 x 14	29.50	225	5.56	4.50	18.00	98.0	158
16 x 12	29.00	225	5.56	6.38	18	88.8	147.4
18 x 16	33.75	225	12.00	5.56	46.00*	110	204
18 x 14	33.50	225	12	3.88	46.00*	100	199.1
20 x 18	41.00	225	13.75	12.00	53.00*	122	229
20 x 16	38.00	225	13.75	5.56	53.00*	106	223.1
24 x 20	58.25	225	15.62	13.75	70.00*	147	275
24 x 18	47.00	225	15.64	12	70.00*	133	268.4

NOTE: Eccentric Reducers are the same OAL as Concentric Reducers.

* Nipples and flanges

(1) This is a nominal make-up dimension for drawing layout work only. Do not use for assembly dimensions.

SILVER STREAK® EP FITTINGS DIMENSIONS



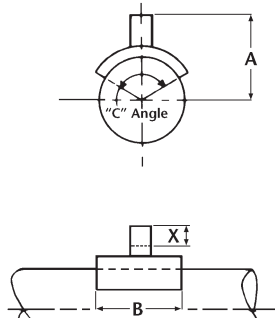
REDUCING TEES

Nom. Size	A	X1 ⁽¹⁾	B	X2 ⁽¹⁾	Nom. Wgt.	Steady Pressure
In.	In.	In.	In.	In.	Lbs.	psig
8x6	13.50	5.3	10.25	2.8	36	225
8x4	13.50	5.3	10.25	3.1	33	225
8x3	13.50	5.3	9.88	2.9	31	225
8x2	13.50	5.3	9.81	2.6	28	225
10x8	15.75	5.1	13.50	5.3	48	225
10x6	15.75	5.1	11.75	2.8	44	225
10x4	15.75	5.1	11.75	3.1	41	225
10x3	15.75	5.1	11.38	2.9	37	225
12x10	17.00	6.4	15.75	5.1	72	225
12x8	17.00	6.4	15.00	5.3	65	225
12x6	17.00	6.4	13.25	2.8	60	225
12x4	17.00	6.4	13.25	3.1	55	225
14x12	19.56	4.6	17.00	6.4	93	225
14x10	19.56	4.6	16.25	5.1	85	225
14x8	19.56	4.6	15.50	5.3	77	225
14x6	19.56	4.6	13.75	2.8	71	225
16x14	21.25	5.6	20.00	4.6	111	225
16x12	21.25	5.6	18.00	6.4	101	225
16x10	21.25	5.6	17.25	5.1	91	225
16x8	21.25	5.6	16.50	5.3	83	225

(1) This is a nominal make-up dimension for drawing layout work only. Do not use for assembly dimensions.

SILVER STREAK® EP FITTINGS DIMENSIONS

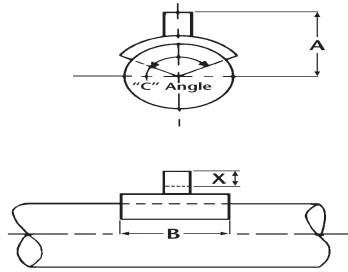
Saddles



Size	A	B	X	Steady Pressure Rating
In.	In.	In.	In.	psi
2x1	2.88	4	1	450
2x1½	2.88	4	1.38	450
3x1	3.50	6	1	300
3x1½	3.50	6	1.38	300
3x2	4	6	2.64	300
4x1	4	6	1	225
4x1½	4	6	1.38	225
4x2	4.50	6	2.64	225
4x3	5.25	6	2.88	225
6x1	5	6	1	225
6x1½	5	6	1.38	225
6x2	5.50	6	2.64	225
6x3	6.25	6	2.88	225
6x4	6.38	8	3.13	225
8x2	8.25	9	2.64	225
8x3	8.25	14	2.88	225
8x4	8.64	14	3.13	225
8x6	8.64	14	2.75	190
10x2	9.25	9	2.64	225
10x3	9.25	14	2.88	225
10x4	9.64	16.75	3.13	225
10x6	9.64	16.75	2.75	190
10x8	13.88	16.75	5.25	150
12x2	10.25	10	2.64	225
12x3	10.25	14	2.88	225
12x4	10.64	17	3.13	225
12x6	10.64	21	2.75	225
12x8	14.88	21	5.25	190
12x10	15.64	21	5.13	150

SILVER STREAK® EP FITTINGS DIMENSIONS

Saddles



Size	A	B	X	Steady Pressure Rating
In.	In.	In.	In.	psi
14x2	11	12	2.64	225
14x3	11.13	15	2.88	225
14x4	11.50	17	3.50	225
14x6	11.64	21	2.75	225
14x8	15.75	21	5.25	225
14x10	15.64	26	5.13	150
14x12	17.25	26	6.38	150
16x2	12	13	2.64	225
16x3	12.13	15	2.88	225
16x4	12.50	17	3.13	225
16x6	12.64	21	2.75	150
16x8	16.75	26	5.25	150
16x10	17.64	26	5.13	225
16x12	18.25	26	6.38	225
18x2	12.88	13	2.64	225
18x3	13.25	15	2.88	225
18x4	13.25	17	3.13	225
18x6	14.50	21	2.75	150
18x8	16	26	5.25	150
18x10	15.88	28	5.13	225
18x12	16.25	32	6.38	225
20x2	13.88	13	2.64	225
20x3	14.25	15	2.88	225
20x4	14.25	17	3.50	225
20x6	15.50	21	2.75	150
20x8	17	26	5.25	150
20x10	17	28	5.13	225
20x12	17.25	17	6.38	225
24x2	16	13	2.64	225
24x3	16.25	15	2.88	225
24x4	16.25	17	3.13	225
24x6	17.64	21	2.75	150
24x8	19.13	26	5.25	150
24x10	19	28	5.13	225
24x12	19.38	32	6.38	225

SILVER STREAK® EP FITTINGS DIMENSIONS

All dimensions listed above are nominal in nature and should only be used for system layout and take off. Actual fittings and fabrication work should be measured before bonding to ensure dimensional accuracy. Smith Fibercast does not warrant and is in no way responsible for the workmanship of any distributor, contractor or others involved in the installation of the goods.

Fiber Glass Systems™ 
STAR • SMITH • FIBERCAST



It is the policy of Fiber Glass Systems to improve its products continually. In accordance with that policy, the right is reserved to make changes in specifications, descriptions, and illustrative material contained in this bulletin as conditions warrant. Always cross-reference the bulletin date with the most current version listed at www.fgspipe.com. The information contained herein is general in nature and is not intended to express any warranty of any type whatsoever, nor shall any be implied.

SMITH FIBERCAST
2700 West 65th Street • Little Rock, AR 72209
(501) 568-4010 • Fax: (501) 568-4465

P.O. Box 968 • 25 South Main • Sand Springs, OK 74063
(918) 245-6651 • Fax: (918) 245-7566

<http://www.fgspipe.com>