

# HP 25 Epoxy Fittings

(Filament wound with reinforced epoxy inner liner - Compatible with Red Thread and Green Thread HP 25 piping systems)



## 90° Elbow

Pipe Size		A		X <sup>(1)</sup>		Weight	
in	mm	in	mm	in	mm	lbs	kg
2	50	6.31	160	2.44	62	8	4
3	80	7.94	202	2.46	63	14	6
4	100	9.75	248	2.98	76	22	10
6	150	12.81	325	2.70	69	28	13
8	200	19.50	495	5.87	149	40	18
10	250	23.25	591	6.79	172	60	27
12	300	27.00	686	7.43	189	90	41
14	350	30.00	762	6.87	175	135	61
16	400	34.00	864	7.65	194	180	82
18	450	40.75	1035	11.88	302	480	216
20	500	47.25	1200	13.92	354	550	250
24	600	57.00	1448	17.10	434	650	295

## Tees

Pipe Size		A		X <sup>(1)</sup>		Weight	
in	mm	in	mm	in	mm	lbs	kg
2	50	5.56	141	2.44	62	13	6
3	80	6.25	159	2.46	63	21	9
4	100	7.44	189	2.98	76	29	13
6	150	9.56	243	2.70	69	36	16
8	200	13.50	343	5.87	149	60	27
10	250	15.75	400	6.79	172	90	41
12	300	17.00	432	7.43	189	130	59
14	350	19.50	495	6.87	175	190	86
16	400	21.25	540	7.65	194	250	113
18	450	26.38	670	11.88	302	600	272
20	500	31.25	794	13.92	354	700	318
24	600	35.00	889	17.10	434	800	363

## 45° Elbow

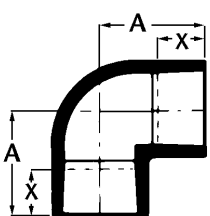
Pipe Size		A		X <sup>(1)</sup>		Weight	
in	mm	in	mm	in	mm	lbs	kg
2	50	4.55	116	2.44	62	6	3
3	80	5.25	133	2.46	63	10	5
4	100	6.25	159	2.98	76	17	8
6	150	7.50	191	2.70	69	21	9
8	200	12.47	317	5.87	149	24	11
10	250	14.46	367	6.79	172	36	16
12	300	16.46	418	7.43	189	50	23
14	350	17.70	450	6.87	175	85	38
16	400	19.94	506	7.65	194	120	54
18	450	24.93	633	11.88	302	290	132
20	500	29.68	754	13.92	354	330	150
24	600	35.91	912	17.10	434	400	181

## Sleeve Couplings

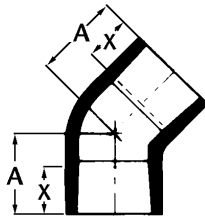
Pipe Size		A		X <sup>(1)</sup>		Weight	
in	mm	in	mm	in	mm	lbs	kg
2	50	6.00	152	1.61	41	1	0.5
3	80	6.00	152	1.72	44	3	1.5
4	100	7.00	178	2.52	64	7	3
6	150	8.38	213	2.97	75	14	6
8	200	12.50	318	4.77	121	15	7
10	250	16.50	419	5.87	149	17	8
12	300	18.00	457	6.52	166	25	11
14	350	16.00	406	6.30	160	30	14
16	400	18.00	457	5.75	146	36	16
18	450	29.00	737	11.88	302	125	57
20	500	36.00	914	13.92	354	160	73
24	600	43.50	1105	17.10	434	195	88

<sup>(1)</sup> Nominal make-up dimension for drawing layout work only using non-threaded spigots. Do not use for assembly dimensions.

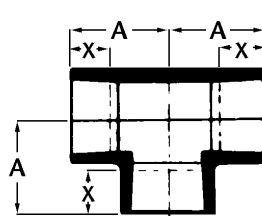
### View of Fitting Illustrations



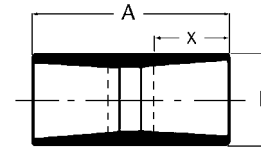
90° Elbow



45° Elbow



Tee



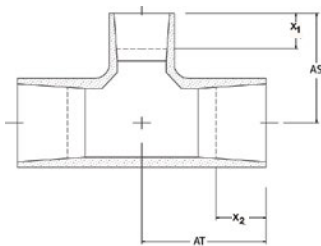
Sleeve Coupling

## Reducing Tees

Pipe Size		AT		$X_1^{(1)}$		AS		$X_2^{(1)}$		Weight	
in	mm	in	mm	in	mm	in	mm	in	mm	lbs	kg
3x2	80x50	6.22	158	2.46	62	6.99	178	2.44	62	19	9.0
4x2	100x50	7.46	189	2.98	76	7.46	189	2.44	62	28	13.0
4x3	100x80	7.46	189	2.98	76	7.46	189	2.46	62	31	14.0
6x2	150x50	9.53	242	2.70	69	8.45	215	2.44	62	36	16.0
6x3	150x80	9.53	242	2.70	69	8.55	217	2.46	62	38	17.0
6x4	150x100	9.53	242	2.70	69	8.91	226	2.98	76	45	20.0
8x2	200x50	13.50	343	5.87	149	9.81	249	2.44	62	39	18.0
8x3	200x80	13.50	343	5.87	149	9.91	252	2.46	62	41	18.0
8x4	200x100	13.50	343	5.87	149	10.27	261	2.98	76	45	20.0
8x6	200x150	13.50	343	5.87	149	10.28	261	2.70	69	50	22.0
10x3	250x40	15.75	400	6.79	172	11.41	290	2.46	62	58	26.0
10x4	250x100	15.75	400	6.79	172	11.77	299	2.98	76	60	27.0
10x6	250x150	15.75	400	6.79	172	11.78	299	2.70	69	65	29.0
10x8	250x200	15.75	400	6.79	172	15.50	394	5.87	149	70	32.0
12x4	300x100	17.00	432	7.43	189	13.27	337	2.98	76	77	35.0
12x6	300x150	17.00	432	7.43	189	13.28	337	2.70	69	81	36.0
12x8	300x200	17.00	432	7.43	189	17.00	432	5.87	149	89	40.0
12x10	300x250	17.00	432	7.43	189	17.75	451	6.79	172	94	43.0
14x6	350x150	19.50	495	6.87	174	13.80	351	2.70	69	130	59.0
14x8	350x200	19.50	495	6.87	174	17.52	445	5.87	149	137	62.0
14x10	350x250	19.50	495	6.87	174	18.27	464	6.79	172	144	65.0
14x12	350x300	19.50	495	6.87	174	19.02	483	7.43	189	152	68.0
16x8	400x200	21.25	540	7.65	194	18.53	471	5.87	149	168	76.0
16x10	400x250	21.25	540	7.65	194	19.28	490	6.79	172	174	78.0
16x12	400x300	21.25	540	7.65	194	20.03	509	7.43	189	183	82.0
16x14	400x350	21.25	540	7.65	194	20.03	509	6.87	174	192	86.0
18x10	450x250	26.38	670	11.88	302	22.27	566	6.79	172	340	153.0
18x12	450x300	26.38	670	11.88	302	23.02	585	7.43	189	355	160.0
18x14	450x350	26.38	670	11.88	302	21.02	534	6.87	174	370	167.0
18x16	450x400	26.38	670	11.88	302	22.02	559	7.65	194	390	176.0
20x12	500x300	31.25	794	13.92	354	24.52	623	7.43	189	380	171.0
20x14	500x350	31.25	794	13.92	354	22.52	572	6.87	174	390	176.0
20x16	500x400	31.25	794	13.92	354	23.52	597	7.65	194	410	185.0
20x18	500x400	31.25	794	13.92	354	26.77	680	11.88	302	440	198.0
24x14	600x350	35.00	889	17.10	434	25.02	636	6.87	174	490	221.0
24x16	600x400	35.00	889	17.10	434	26.02	661	7.65	194	500	225.0
24x18	600x450	35.00	889	17.10	434	29.27	743	11.88	302	520	234.0
24x20	600x500	35.00	889	17.10	434	32.77	832	13.92	354	550	248.0

<sup>(1)</sup> Nominal make-up dimension for drawing layout work only using non-threaded spigots. Do not use for assembly dimensions.

### View of Fitting Illustrations



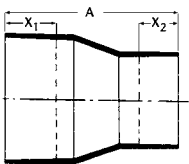
Reducing Tee

## Concentric Reducers

Pipe Size		A		X <sub>1</sub> <sup>(1)</sup>		X <sub>2</sub> <sup>(1)</sup>		Weight	
in	mm	in	mm	in	mm	in	mm	lbs	kg
3x2	80x50	6.22	158	2.46	62	6.99	178	19	9.0
4x2	100x50	7.46	189	2.98	76	7.46	189	28	13.0
4x3	100x80	7.46	189	2.98	76	7.46	189	31	14.0
6x2	150x50	9.53	242	2.70	69	8.45	215	36	16.0
6x3	150x80	9.53	242	2.70	69	8.55	217	38	17.0
6x4	150x100	9.53	242	2.70	69	8.91	226	45	20.0
8x2	200x50	13.50	343	5.87	149	9.81	249	39	18.0
8x3	200x80	13.50	343	5.87	149	9.91	252	41	18.0
8x4	200x100	13.50	343	5.87	149	10.27	261	45	20.0
8x6	200x150	13.50	343	5.87	149	10.28	261	50	22.0
10x3	250x40	15.75	400	6.79	172	11.41	290	58	26.0
10x4	250x100	15.75	400	6.79	172	11.77	299	60	27.0
10x6	250x150	15.75	400	6.79	172	11.78	299	65	29.0
10x8	250x200	15.75	400	6.79	172	15.50	394	70	32.0
12x4	300x100	17.00	432	7.43	189	13.27	337	77	35.0
12x6	300x150	17.00	432	7.43	189	13.28	337	81	36.0
12x8	300x200	17.00	432	7.43	189	17.00	432	89	40.0
12x10	300x250	17.00	432	7.43	189	17.75	451	94	43.0
14x6	350x150	19.50	495	6.87	174	13.80	351	130	59.0
14x8	350x200	19.50	495	6.87	174	17.52	445	137	62.0
14x10	350x250	19.50	495	6.87	174	18.27	464	144	65.0
14x12	350x300	19.50	495	6.87	174	19.02	483	152	68.0
16x8	400x200	21.25	540	7.65	194	18.53	471	168	76.0

<sup>(1)</sup> Nominal make-up dimension for drawing layout work only using non-threaded spigots. Do not use for assembly dimensions.

View of Fitting Illustrations



Concentric Reducer

## Flanges

Pipe Size		A		B		D		O		X <sup>(1)</sup>		Hole Size		# of Bolts	Max Bolt Torque		Weight	
in	mm	in	mm	in	mm	in	mm	in	mm	in	mm	in	mm		ft•lbs	N•m	lbs	kg
<b>ANSI 150</b>																		
2	50	2.92	74	2.75	70	4.75	121	6.19	157	2.39	61	0.750	19	4	100	135	3	1.3
3	80	3.21	82	3.00	76	6.00	152	7.69	195	3.57	91	0.750	19	4	100	135	5	2.4
4	100	3.74	95	3.50	89	7.50	191	9.19	233	4.60	117	0.750	19	8	100	135	9	4.0
6	150	4.22	107	3.95	100	9.50	241	11.19	284	6.70	170	0.875	22	8	100	135	14	6.1
<b>ANSI 300</b>																		
2	50	3.00	76	2.75	70	5.00	127	6.50	165	2.67	68	0.750	19	8	100	135	3	1.4
3	80	3.25	83	3.00	76	6.63	168	8.25	210	2.83	72	0.875	22	8	100	135	6	2.7
4	100	3.75	95	3.50	89	7.88	200	10.00	254	3.30	85	0.875	22	8	100	135	10	4.5
6	150	4.25	108	4.00	102	10.63	270	12.50	317	3.78	96	0.875	22	12	100	135	15	6.8

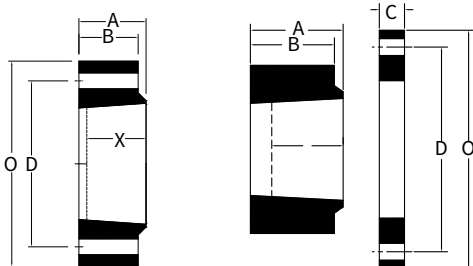
## Van Stone Flanges

Pipe Size		A		B		C		D		O		X <sup>(1)</sup>		Hole Size		# of Bolts	Max Bolt Torque		Weight <sup>(2)</sup>	
in	mm	in	mm	in	mm	in	mm	in	mm	in	mm	in	mm	in	mm		ft•lbs	N•m	lbs	kg
<b>ANSI 150</b>																				
2	50	2.92	74	2.75	70	0.75	19	4.75	121	6.00	152	2.67	68	0.75	19	4	100	135	6	3
3	80	3.21	82	3.00	76	0.75	19	6.00	152	7.50	191	2.83	72	0.75	19	4	100	135	10	4
4	100	3.74	95	3.50	89	1.00	25	7.50	191	9.00	229	3.30	84	0.75	19	8	100	135	15	7
6	150	4.22	107	3.95	100	1.00	25	9.50	241	11.00	279	3.78	96	0.88	22	8	100	135	24	11
8	200	5.00	127	4.75	121	1.50	38	11.75	298	13.50	343	4.50	114	0.88	22	8	200	271	46	21
10	250	6.25	159	6.00	152	1.88	48	14.25	362	16.00	406	5.75	146	1.00	25	12	200	271	74	34
12	300	7.50	191	7.25	184	1.88	48	17.00	432	19.00	483	7.00	178	1.00	25	12	200	271	114	52
14	350	7.00	178	6.50	165	1.88	48	18.75	476	20.75	527	6.25	159	1.13	29	12	200	271	124	56
16	400	7.87	200	7.38	187	2.25	57	21.25	540	23.25	591	7.12	181	1.13	29	16	200	271	180	82
18	450	9.00	229	8.50	216	2.25	57	22.75	578	25.00	635	8.00	203	1.25	32	16	200	271	191	87
20	500	9.88	251	9.38	238	2.25	57	25.00	635	27.50	699	8.88	226	1.25	32	20	200	271	235	107
24	600	11.75	298	11.25	286	2.25	57	29.50	749	32.00	813	10.45	265	1.38	35	20	200	271	303	137

<sup>(1)</sup> X dimension is a nominal make-up dimension for drawing layout work only. Do not use for assembly dimensions.

<sup>(2)</sup> Weights are for the fiberglass Stub End and 2-piece Galvanized steel bolt ring combination.

### View of Fitting Illustrations



Flange

Van Stone Flange

## Van Stone Flanges

Pipe Size		A		B		C		D		O		X <sup>(1)</sup>		Hole Size		# of Bolts	Max Bolt Torque		Weight <sup>(2)</sup>	
in	mm	in	mm	in	mm	in	mm	in	mm	in	mm	in	mm	in	mm		ft•lbs	N•m	lbs	kg
<b>ANSI 300</b>																				
2	50	2.92	74	2.75	70	0.75	19	5.00	127	6.50	165	2.67	68	0.75	19	8	100	135	7	3
3	80	3.21	82	3.00	76	0.75	19	6.63	168	8.25	210	2.83	72	0.88	22	8	100	135	12	5
4	100	3.74	95	3.50	89	1.00	25	7.88	200	10.00	254	3.30	84	0.88	22	8	100	135	19	8
6	150	4.22	107	3.95	100	1.00	25	10.63	270	12.50	318	3.78	96	0.88	22	12	100	135	32	14
8	200	5.00	127	4.75	121	1.50	38	13.00	330	15.00	381	4.50	114	1.00	25	12	200	271	51	23
10	250	6.25	159	6.00	152	1.88	48	15.25	387	17.50	445	5.75	146	1.13	29	16	200	271	78	36
12	300	7.50	191	7.25	184	1.88	48	17.75	451	20.50	521	7.00	178	1.25	32	16	200	271	113	51
14	350	7.00	177	6.50	165	1.88	48	20.25	514	23.00	584	6.25	159	1.25	32	20	200	271	130	59
16	400	7.87	200	7.38	187	2.25	57	22.50	572	25.50	648	7.12	181	1.38	35	20	200	271	174	79
18	450	9.00	229	8.50	216	2.25	57	24.75	629	28.00	711	8.00	203	1.38	35	24	200	271	250	113
20	500	9.88	251	9.38	238	2.25	57	27.00	686	30.50	775	8.88	226	1.38	35	24	200	271	296	134
24	600	11.75	298	11.25	286	2.25	57	32.00	813	36.00	914	10.45	265	1.63	41	24	200	271	447	203

<sup>(1)</sup> X dimension is a nominal make-up dimension for drawing layout work only. Do not use for assembly dimensions.

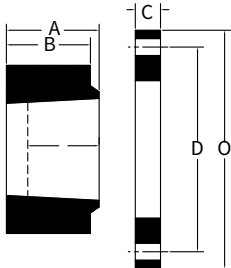
<sup>(2)</sup> Weights are for the fiberglass Stub End and 2-piece Galvanized steel bolt ring combination.

## Nipples

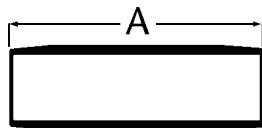
Pipe Size		4	6	8	10	12	16	24	36	48	54
in	mm	100	150	200	250	300	400	600	900	1200	1350
2	50		X	X							
3	80		X	X							
4	100		X	X							
6	150		X	X		X	X				
8	200						X	X			
10	250						X	X	X		
12	300						X	X	X		
14	350						X	X	X		
16	400						X	X	X		
18	450								X		
20	500								X		
24	600								X		

X - Standard available size

View of Fitting Illustrations



Van Stone Flange



Nipple

National Oilwell Varco has produced this brochure for general information only, and it is not intended for design purposes. Although every effort has been made to maintain the accuracy and reliability of its contents, National Oilwell Varco in no way assumes responsibility for liability for any loss, damage or injury resulting from the use of information and data herein nor is any warranty expressed or implied. Always cross-reference the bulletin date with the most current version listed at the web site noted in this literature.

**Fiber Glass Systems**

17115 San Pedro Avenue, Ste 200  
San Antonio, Texas 78232 USA  
Phone: 210 477 7500  
Fax: 210 477 7560

© 2016 National Oilwell Varco All Rights Reserved  
C11360ENG November 2016