

HP 32/40 Epoxy Fittings

(Filament wound with reinforced epoxy inner liner - Compatible with Red Thread and Green Thread HP 32/40 piping systems)



2"-24" fittings and accessories. Sizes 2"-12" are rated to 40 bar and 14"-24" are rated to 32 bar.

90° Elbow

Pipe Size		A		X ⁽¹⁾		Weight	
in	mm	in	mm	in	mm	lbs	kg
2	50	6.25	159	2.50	64	8	3.6
3	80	9.00	229	3.25	83	12	5.4
4	100	11.25	286	4.00	102	16	7.3
6	150	14.75	375	4.50	114	24	10.9
8	200	21.75	552	7.75	197	46	21.0
10	250	26.00	660	8.88	225	93	42.0
12	300	30.50	775	10.25	260	140	63.5
14	350	33.00	838	8.75	222	447	203
16	400	37.00	940	10.00	254	587	267
18	450	41.50	1054	10.52	267	648	294
20	500	46.75	1187	12.32	313	743	337
24	600	56.25	1429	15.61	397	878	398

Tees

Pipe Size		A		X ⁽¹⁾		Weight	
in	mm	in	mm	in	mm	lbs	kg
2	50	5.5	140	2.50	64	14	6.2
3	80	7.25	184	3.25	83	21	9.3
4	100	9.00	229	4.00	102	27	12.4
6	150	11.50	292	4.50	114	56	25.3
8	200	15.75	400	7.75	197	119	53.9
10	250	18.50	470	8.88	225	164	74.4
12	300	20.50	521	10.25	260	258	117
14	350	22.50	571	8.75	222	352	160
16	400	24.50	622	10.00	254	440	200
18	450	27.13	689	10.52	267	513	233
20	500	30.75	781	12.32	313	756	343
24	600	34.25	870	15.61	397	1000	454

45° Elbow

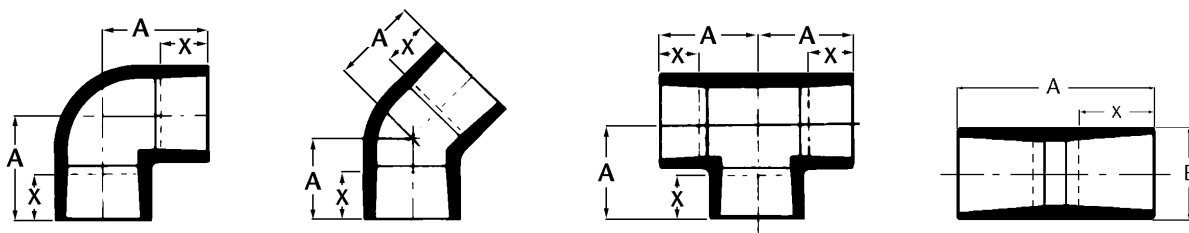
Pipe Size		A		X ⁽¹⁾		Weight	
in	mm	in	mm	in	mm	lbs	kg
2	50	4.50	114	2.50	64	14	6.2
3	80	6.25	159	3.25	83	17	7.8
4	100	7.75	197	4.00	102	28	12.5
6	150	9.50	241	4.50	114	33	14.9
8	200	14.75	375	7.75	197	93	42.0
10	250	17.00	432	8.88	225	145	65.8
12	300	20.00	508	10.25	260	200	90.7
14	350	20.75	527	8.75	222	235	107
16	400	23.00	584	10.00	254	309	140
18	450	25.68	652	10.52	267	392	178
20	500	29.18	741	12.32	313	446	202
24	600	35.16	893	15.61	397	540	245

Sleeve Couplings

Pipe Size		A		X ⁽¹⁾		Weight	
in	mm	in	mm	in	mm	lbs	kg
2	50	6.50	161	2.50	64	0.9	0.4
3	80	8.00	203	3.25	83	1.9	0.8
4	100	9.50	241	4.00	102	2.0	0.9
6	150	10.50	266	4.50	114	4.4	2.0
8	200	18.50	470	7.75	197	11.5	5.2
10	250	20.75	527	8.88	225	17.6	8.0
12	300	24.00	610	10.25	260	25.4	11.5
14	350	25.00	635	8.75	222	156	71.0
16	400	27.25	692	10.00	254	206	93.4
18	450	30.50	775	10.52	267	168	76
20	500	35.00	889	12.32	313	216	98
24	600	42.00	1067	15.61	397	263	119

⁽¹⁾ Nominal make-up dimension for drawing layout work only using non-threaded spigots. Do not use for assembly dimensions.

View of Fitting Illustrations



90° Elbow

45° Elbow

Tee

Sleeve Coupling

Reducing Tees

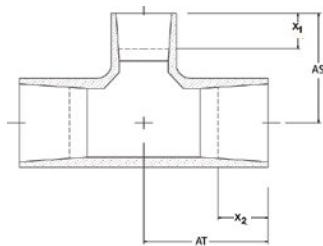
Pipe Size		AT		AS		X ₁ ⁽¹⁾		X ₂ ⁽¹⁾		Weight	
in	mm	in	mm	in	mm	in	mm	in	mm	lbs	kg
3 x 2	80 x 50	7.19	183	7.01	178	3.25	83	2.50	64	21	9.3
4 x 3	100 x 80	8.87	225	8.45	215	4.00	102	3.25	83	27	12.4
4 x 2	100 x 50	8.87	225	7.48	190	4.00	102	2.50	64	27	12.4
6 x 4	150 x 100	11.5	292	10.39	264	4.50	114	4.00	102	56	25.3
6 x 3	150 x 80	11.5	292	9.51	242	4.50	114	3.25	83	56	25.3
8 x 6	200 x 150	15.75	400	12.25	311	7.75	197	4.50	114	119	53.9
8 x 4	200 x 100	15.75	400	11.75	298	7.75	197	4.00	102	119	53.9
10 x 8	250 x 200	18.38	467	17.75	451	8.87	225	7.75	197	164	74.4
10 x 6	250 x 150	18.38	467	13.75	349	8.87	225	4.50	114	164	74.4
12 x 10	300 x 250	20.50	521	20.38	518	10.25	260	8.87	225	258	117
12 x 8	300 x 200	20.50	521	19.25	489	10.25	260	7.75	197	258	117
14 x 12	350 x 300	22.50	571	22.52	572	8.75	222	10.25	260	352	160
14 x 10	350 x 250	22.50	571	20.90	531	8.75	222	8.75	222	352	160
16 x 14	400 x 350	24.38	619	23.03	585	9.75	251	8.75	222	440	200
16 x 12	400 x 300	24.38	619	23.53	598	9.75	251	10.25	260	440	200
18 x 16	450 x 400	27.13	689	25.15	638	10.52	267	10.00	254	513	233
18 x 14	450 x 350	27.13	689	24.02	610	10.52	267	8.75	222	513	233
20 x 18	500 x 450	30.75	781	27.52	699	12.32	313	10.52	267	756	343
20 x 16	500 x 400	30.75	781	26.15	664	12.32	313	10.00	254	756	343
24 x 20	600 x 500	34.25	870	32.27	820	15.61	397	12.32	313	1000	454
24 x 18	600 x 450	34.25	870	30.02	763	15.61	396	10.52	267	1000	454

Concentric Reducers

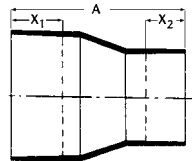
Pipe Size		A		X ₁ ⁽¹⁾		X ₂ ⁽¹⁾		Weight	
in	mm	in	mm	in	mm	in	mm	lbs	kg
3 x 2	80 x 50	9.25	235	3.25	83	2.50	64	8.1	3.7
4 x 3	100 x 80	11.75	298	4.00	102	3.25	83	11.7	5.3
6 x 4	150 x 100	15.00	381	4.50	114	4.00	102	15.4	7.0
8 x 6	200 x 150	21.00	533	7.75	167	4.50	114	27.0	12.2
10 x 8	250 x 200	26.00	660	8.875	229	7.75	167	44.5	20.2
12 x 10	300 x 250	29.75	756	10.25	261	8.875	225	69.4	31.5
14 x 12	350 x 300	32.75	834	8.875	225	10.25	261	107	48.4
16 x 14	400 x 350	35.75	906	10.00	254	8.75	222	154	70.1
18 x 14	450 x 350	37.13	943	10.52	267	8.75	222	182	82.6
18 x 16	450 x 400	37.63	956	10.52	267	10.00	254	190	86.2
20 x 16	500 x 400	40.51	1029	12.32	313	10.00	254	237	107.5
20 x 18	500 x 450	41.25	1048	12.32	313	10.52	267	256	116.1
24 x 18	600 x 450	47.00	1194	15.61	396	10.52	267	295	133.8
24 x 20	600 x 500	57.00	1448	15.61	396	12.32	313	310	140.6

⁽¹⁾ Nominal make-up dimension for drawing layout work only using non-threaded spigots. Do not use for assembly dimensions.

View of Fitting Illustrations



Reducing Tee



Concentric Reducer

Flanges

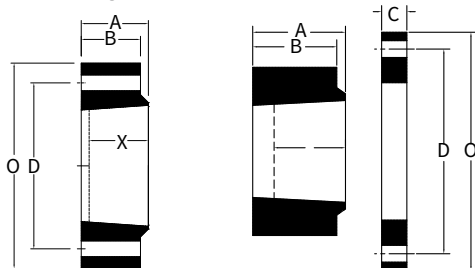
Pipe Size		A		B		D		O		X ⁽¹⁾		Hole Size		# of Bolts	Max Bolt Torque		Weight	
in	mm	in	mm	in	mm	in	mm	in	mm	in	mm	in	mm		ft·lbs	N·m	lbs	kg
ANSI 150																		
2	50	3.00	74	2.75	70	4.75	121	6.00	152	2.75	70	0.75	19	4	100	136	4.8	2.2
3	80	3.25	82	3.00	76	6.00	152	7.50	190	3.00	76	0.75	19	4	100	136	7.5	3.4
4	100	3.75	95	3.50	89	7.50	191	9.00	228	3.50	89	0.75	19	8	150	204	11.9	5.4
6	150	4.25	107	4.00	100	9.50	241	11.00	279	4.00	101	0.88	22	8	150	204	17.4	7.9
ANSI 300																		
2	50	3.00	74	2.75	70	5.00	127	6.50	165	2.75	68	0.75	19	8	100	136	5.4	2.5
3	80	3.25	82	3.00	76	6.63	168	8.25	210	3.00	75	0.88	22	8	100	136	9.0	4.1
4	100	3.75	95	3.50	89	7.88	200	10.00	254	3.50	89	0.88	22	8	150	204	16.0	7.1
6	150	4.25	107	4.00	100	10.63	270	12.50	317	4.00	101	0.88	22	12	150	204	25.5	11.6

Van Stone Flanges

Pipe Size		A		B		C		D		O		X ⁽¹⁾		Hole Size		# of Bolts	Max Bolt Torque		Weight	
in	mm	in	mm	in	mm	in	mm	in	mm	in	mm	in	mm	in	mm		ft·lbs	N·m	lbs	kg
ANSI 300																				
8	200	5.00	127	4.75	121	1.50	38	13.00	330	15.00	381	5.00	124	1.00	25	12	200	272	50.7	23.0
10	250	6.25	159	6.00	152	1.88	48	15.25	387	17.50	445	6.00	156	1.13	28	16	200	272	78.4	35.6
12	300	7.50	191	7.25	184	1.88	48	17.75	451	20.50	521	7.50	187	1.25	31	16	200	272	113	51.3
14	350	7.00	178	6.50	165	2.25	57	20.25	514	23.00	584	7.00	175	1.25	31	20	250	340	130	58.9
16	400	7.88	200	7.38	187	2.25	57	22.50	572	25.50	648	7.75	197	1.38	35	20	250	340	174	78.9
18	450	9.00	229	8.50	216	2.25	57	24.75	629	28.00	711	8.37	213	1.38	35	24	450	610	88	39.9
20	500	9.88	251	9.38	238	2.25	57	27.00	686	30.50	775	10.02	255	1.38	35	24	450	610	136	61.7
24	600	10.75	273	11.25	286	2.50	64	32.00	813	36.00	914	12.83	326	1.63	41	24	450	610	183	83.0

⁽¹⁾ X dimension is a nominal make-up dimension for drawing layout work only. Do not use for assembly dimensions.

View of Fitting Illustrations



Flange

Van Stone Flange

National Oilwell Varco has produced this brochure for general information only, and it is not intended for design purposes. Although every effort has been made to maintain the accuracy and reliability of its contents, National Oilwell Varco in no way assumes responsibility for liability for any loss, damage or injury resulting from the use of information and data herein nor is any warranty expressed or implied. Always cross-reference the bulletin date with the most current version listed at the web site noted in this literature.

Fiber Glass Systems

17115 San Pedro Avenue, Ste 200
San Antonio, Texas 78232 USA
Phone: 210 477 7500
Fax: 210 477 7560

© 2017 National Oilwell Varco All Rights Reserved
C11370ENG June 2017